



AmeriHealth Caritas™
Louisiana

www.amerihealthcaritasla.com

You can have this information in other languages and formats at no charge to you. You can also have this interpreted over the phone in any language. Call Member Services 24 hours a day, 7 days a week at **1-888-756-0004**. For TTY, call **1-866-428-7588**.

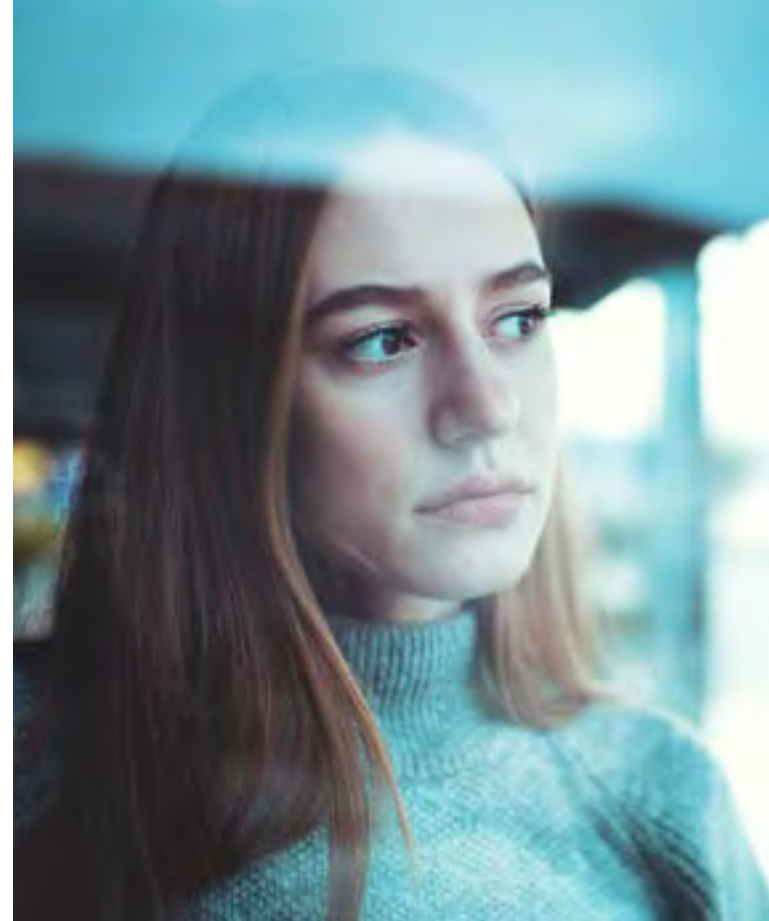
Quý vị có thể có thông tin này bằng các ngôn ngữ và định dạng khác miễn phí. Quý vị cũng có thể có thông tin này thông dịch ra bất kỳ ngôn ngữ nào qua điện thoại. Xin gọi Dịch vụ Thành viên phục vụ 24 giờ/ngày, 7 ngày/tuần theo số **1-888-756-0004**. Đối với người sử dụng TTY, xin gọi số **1-866-428-7588**.

Usted puede tener esta información en otros idiomas y formatos sin costo alguno para usted. También puede tener esto interpretado por teléfono en cualquier idioma. Llame a Servicios al Miembro al **1-888-756-0004** las 24 horas del día, los 7 días de la semana. Para TTY, llame al **1-866-428-7588**.

ACLA_222284490-1

All images are used under license for illustrative purposes only.
Any individual depicted is a model.

REV. 2022 10 17



What Is Trauma-Informed Care?

Trauma by the numbers^{1,2}

- **70%** of U.S. adults have experienced a traumatic event at least once in their lives.
- More than **90%** of patients utilizing public behavioral health care services have experienced trauma.
- More than **66%** of children have experienced at least one traumatic event by age 16.
- **33%** of young people exposed to community violence will experience post-traumatic stress disorder (PTSD).



AmeriHealth Caritas™
Louisiana

What Is Trauma-Informed Care?

Trauma-informed care is a multipronged public health approach that helps providers and caregivers better understand trauma and its far-reaching effects. Trauma, which occurs when a person has an intense and negative emotional response to a serious event, can happen to anyone regardless of age or background. However, certain communities and people with certain conditions may be at a heightened risk for trauma.³

The American Academy of Family Physicians recommends that practices must be prepared to safely and promptly address experiences of trauma, including ongoing cases of trauma, such as interpersonal violence, that require immediate attention and compliance with mandatory reporting laws where applicable.⁴

What does trauma look like?

Traumatic events can come in many forms. Some examples can include:^{3,5}

- Sexual abuse
- Physical abuse
- Mental or emotional abuse
- Adverse childhood experiences
- Interpersonal violence
- Community violence
- Loss of a loved one
- Gruesome accidents or injuries
- Witnessing violence or death
- Fire or natural disaster
- Racial, cultural, identity, and gender discrimination
- Chronic poverty, homelessness, and lacking basic needs

How does trauma impact health?

Experiencing trauma and living through a traumatic event can seriously impact a person's health and well-being — both physical and mental. According to Harvard Women's Health Watch, the more trauma a person has experienced, the worse that person's health typically is.⁶

Physical health risks increased by trauma:^{5,7}

- Heart attack
- Stroke
- Cancer
- Obesity
- Diabetes
- Chronic obstructive pulmonary disease
- Sexually transmitted diseases

Behavioral health risks increased by trauma:^{5,7}

- Post-traumatic stress disorder (PTSD)
- Depression
- Anxiety
- Substance use disorder
- Suicidal ideation and behavior

Highlighting discrimination-based trauma

Racism is an ongoing public health crisis. In addition to **prompting poorer health outcomes**, discrimination-based trauma further increases societal inequities and decreases opportunities for success in individuals, communities, and entire generations.⁸

According to the National Child Traumatic Stress Network, people of color experience higher levels of trauma and adverse life experiences compared to their white counterparts. The cumulative effects of stress on people of color stemming from racial trauma have far-reaching consequences. Compared to their white counterparts:⁹

- People of color have an increased risk of PTSD, depression, and substance use disorders with fewer resources to help successfully manage these conditions.
- Communities of color face unprecedented economic and educational disadvantages in addition to experiencing daily inequities in regards to bias, violence, and experiences with the legal and health systems.
- Generations of color continue to experience the effects of intergenerational and historical trauma, which can be passed down through epigenetics.

Is your practice trauma-informed?

For more information on trauma-informed care, contact **your dedicated AmeriHealth Caritas Louisiana Provider Network Management Account Executive**. If you're not sure who your Account Executive is, you can find a list of account executives and the service areas at <https://www.amerihhealthcaritasla.com/pdf/provider-account-executives.pdf>.

Sources:

1. "How to Manage Trauma," National Council for Community Behavioral Healthcare, www.integration.samhsa.gov/clinical-practice/Trauma-infographic.pdf.
2. "Understanding Childhood Trauma," Substance Abuse and Mental Health Services Administration, updated April 29, 2020, www.samhsa.gov/child-trauma/understanding-child-trauma.
3. "SAMHSA's Concept of Trauma and Guidance for a Trauma-Informed Approach," SAMHSA's Trauma and Justice Strategic Initiative, accessed May 5, 2021, https://ncsacw.samhsa.gov/userfiles/files/SAMHSA_Trauma.pdf.
4. "Providing Trauma-Informed Care," American Academy of Family Physicians, accessed August 6, 2021, www.aafp.org/afp/2017/0515/p655.html.
5. "The ABC's of Trauma-Informed Care," National Council for Behavioral Health, accessed May 5, 2021, www.thenationalcouncil.org/wp-content/uploads/2020/04/The-ABCs-of-Trauma-Informed-Care-4.22.16.pdf?dof=375ateTbd56.
6. "Past trauma may haunt your future health," Harvard Women's Health Watch, updated February 12, 2021, www.health.harvard.edu/diseases-and-conditions/past-trauma-may-haunt-your-future-health.
7. "Adverse Childhood Experiences: Looking at how ACEs affect our lives & society," Centers for Disease Control and Prevention, accessed May 11, 2021, https://vetoviolence.cdc.gov/apps/phl/resource_center_infographic.html.
8. "Racial Trauma," Mental Health America, accessed August 6, 2021, www.mhanational.org/racial-trauma.
9. "Cultural Responsiveness to Racial Trauma," National Child Traumatic Stress Network, accessed May 5, 2021, www.nctsn.org/sites/default/files/resources/special-resource/cultural_responsiveness_to_racial_trauma_understanding_racial_trauma_why_it_matters_and_what_to_do.pdf.

AmeriHealth Caritas Louisiana complies with applicable federal civil rights laws and does not discriminate based on race, color, national origin, age, disability, creed, religious affiliation, ancestry, sex, gender identity or expression, or sexual orientation.
